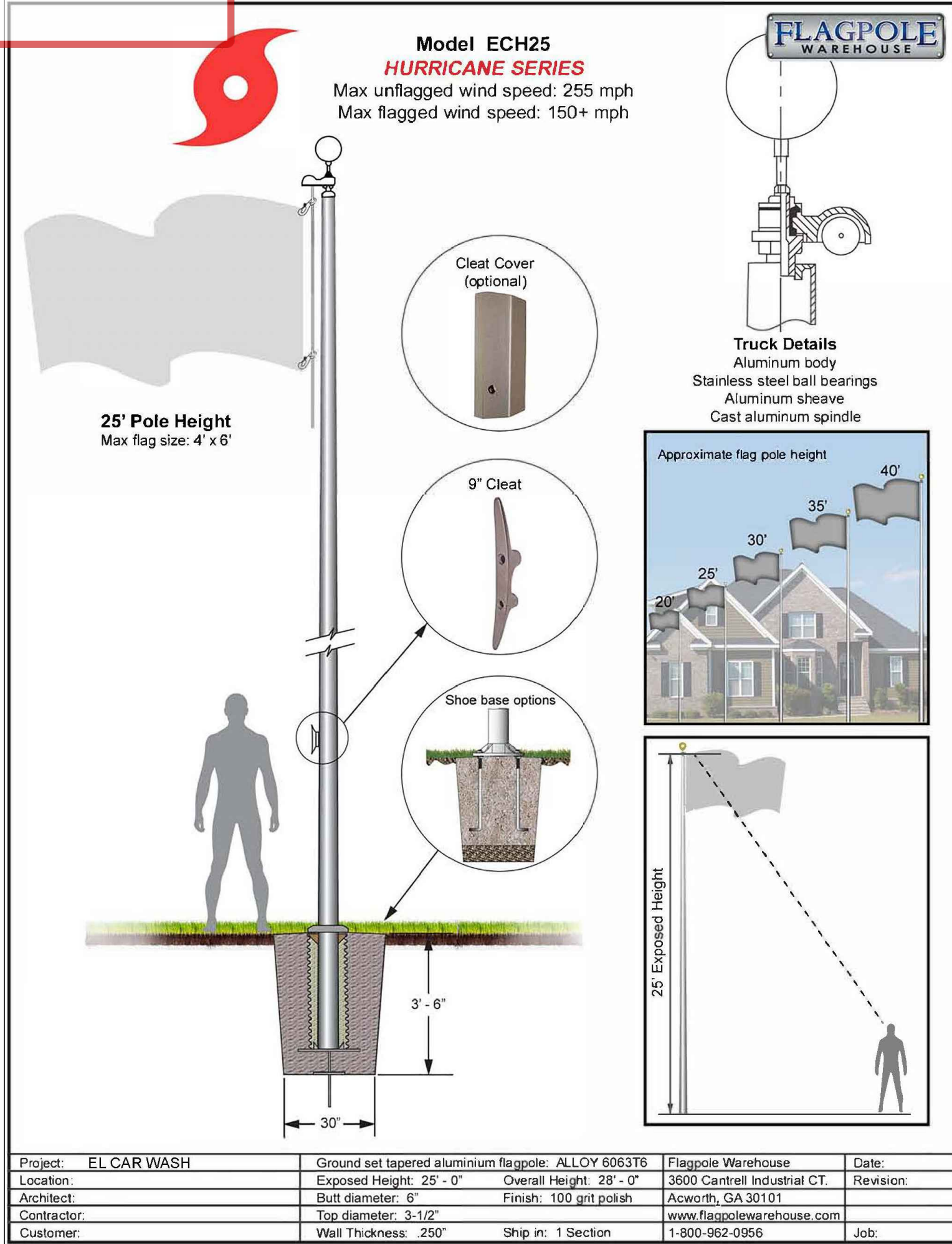


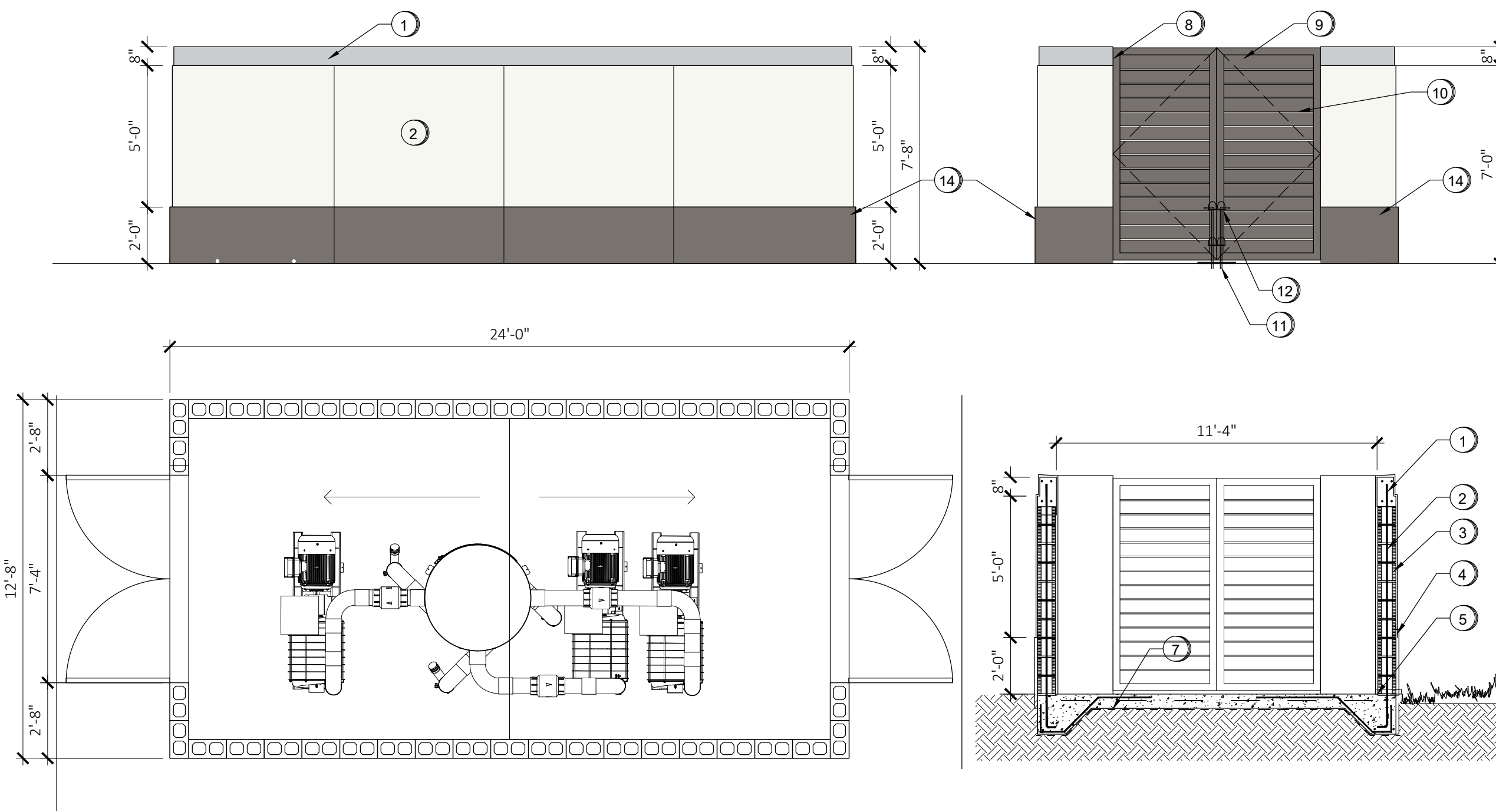
DRC

PZ25- 12000013
12/03/2025



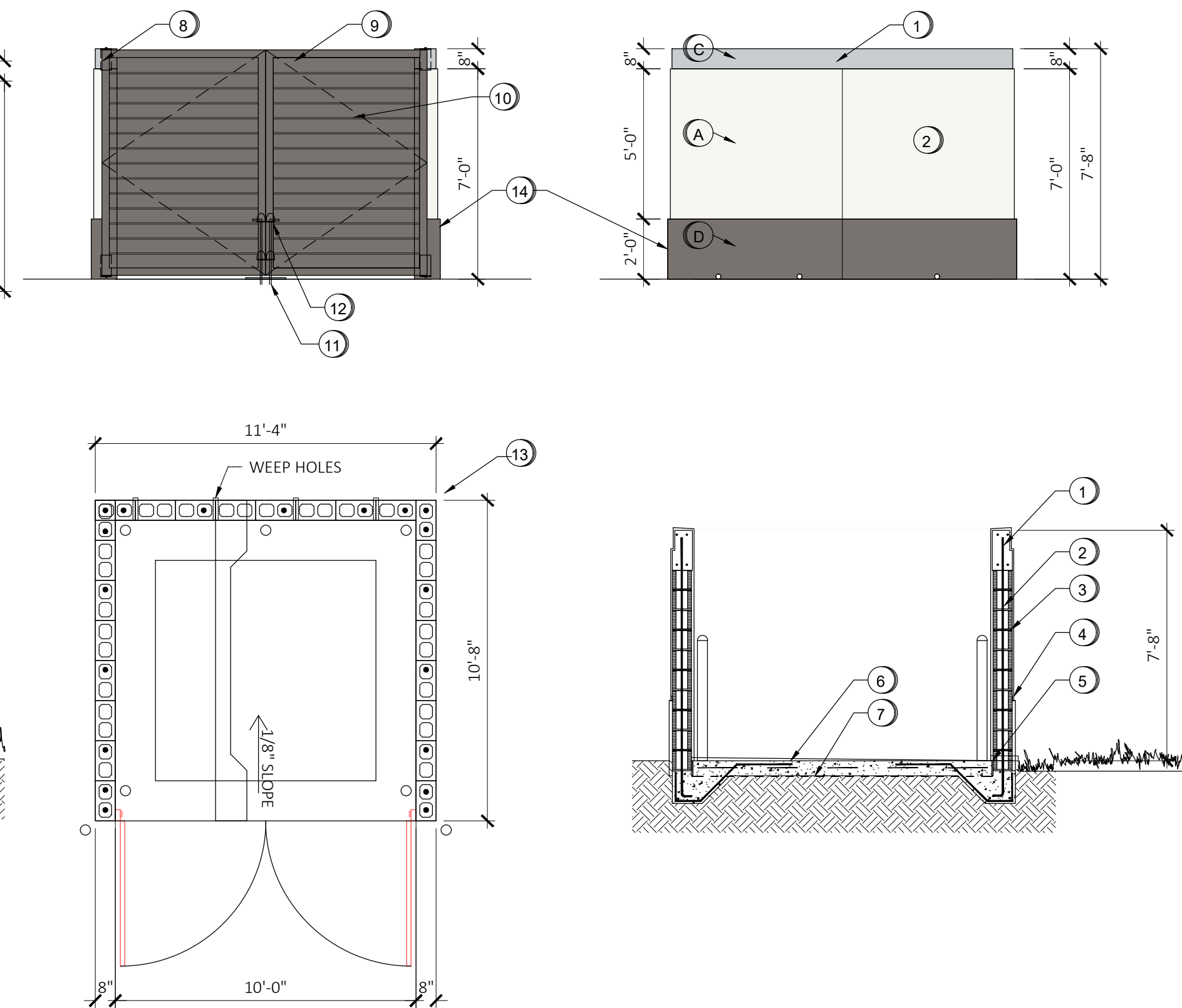
VACUUM ENCLOSURE KEY NOTES:

1. CAST IN PLACE CONCRETE CAP WITH 2 #5 CONT. TOP & BOTTOM
2. CMU WALL WITH #5 BAR IN GROUT FILLED CELLS @ 32" O.C. AND ALL CORNERS.
3. PROVIDE 9 GA WIRE TYPE REINFORCING AT EVERY OTHER BLOCK COURSE.
4. 5/8 " 3 COAT SMOOTH STUCCO FINISH. WITH TOOLED 1/4" VERTICAL REVEAL. PROVIDE PLASTIC J BEAD AT TRANSITION TO STUCCO BASE.
5. PROVIDE 1/2 " EXPANSION JOINT FILLER.
6. 6" THICK SLOPPED CONCRETE 3000 PSI NORMAL WEIGHT CONCRETE SLAB ON GRADE WITH W6X6X10 WWM.
7. PROVIDE 6 MIL VAPOR BARRIER.
8. HEAVY DUTY HINGES
9. PROVIDE 1X3 TUBE STEEL FRAME
10. 3/4" X 6" HORIZONTAL TUBE SLATS @ 6.5" O.C. PAINTED TO CREATE OPAQUE GATE.
11. STEEL PLATE WITH (2) 1" Ø HOLES FOR DROP PINS. DRILL ASPHALT 2" DEEP MIN.
12. PROVIDE HEAVY DUTY 3/4" ALUMINUM STOP PIN (CAIN BOLT) CLOSING DEVICE.
13. FOOTING SEE SCHEDULE
14. PROVIDE 1-1/4" SMOOTH STUCCO 24" HIGH BASE WITH ACCENT COLOR. TERMINATE 6" BELOW GRADE.



DUMPSTER ENCLOSURE KEY NOTES:

1. CAST IN PLACE CONCRETE CAP WITH 2 #5 CONT. TOP & BOTTOM
2. CMU WALL WITH #5 BAR IN GROUT FILLED CELLS @ 32" O.C. AND ALL CORNERS.
3. PROVIDE 9 GA WIRE TYPE REINFORCING AT EVERY OTHER BLOCK COURSE.
4. 5/8 " 3 COAT SMOOTH STUCCO FINISH. WITH TOOLED 1/4" VERTICAL REVEAL. PROVIDE PLASTIC J BEAD AT TRANSITION TO STUCCO BASE.
5. PROVIDE 1/2 " EXPANSION JOINT FILLER.
6. 6" THICK SLOPPED CONCRETE 3000 PSI NORMAL WEIGHT CONCRETE SLAB ON GRADE WITH W6X6X10 WWM.
7. PROVIDE 6 MIL VAPOR BARRIER.
8. HEAVY DUTY HINGES
9. PROVIDE 1X3 TUBE ALUMINUM FRAME
10. 3/4" X 6" HORIZONTAL TUBE SLATS @ 6.5" O.C. POWDER COATED PAINTED TO CREATE OPAQUE GATE.
11. STEEL PLATE WITH (2) 1" Ø HOLES FOR DROP PINS. DRILL CONCRETE 2" DEEP MIN.
12. PROVIDE HEAVY DUTY 3/4" ALUMINUM STOP PIN (CAIN BOLT) CLOSING DEVICE.
13. FOOTING SEE SCHEDULE
14. PROVIDE 1-1/4" SMOOTH STUCCO 24" HIGH BASE WITH ACCENT COLOR. TERMINATE 6" BELOW GRADE.



4 FLAG POLE DETAIL - 25' HIGH - MAX WIND SPEED 255 MPH

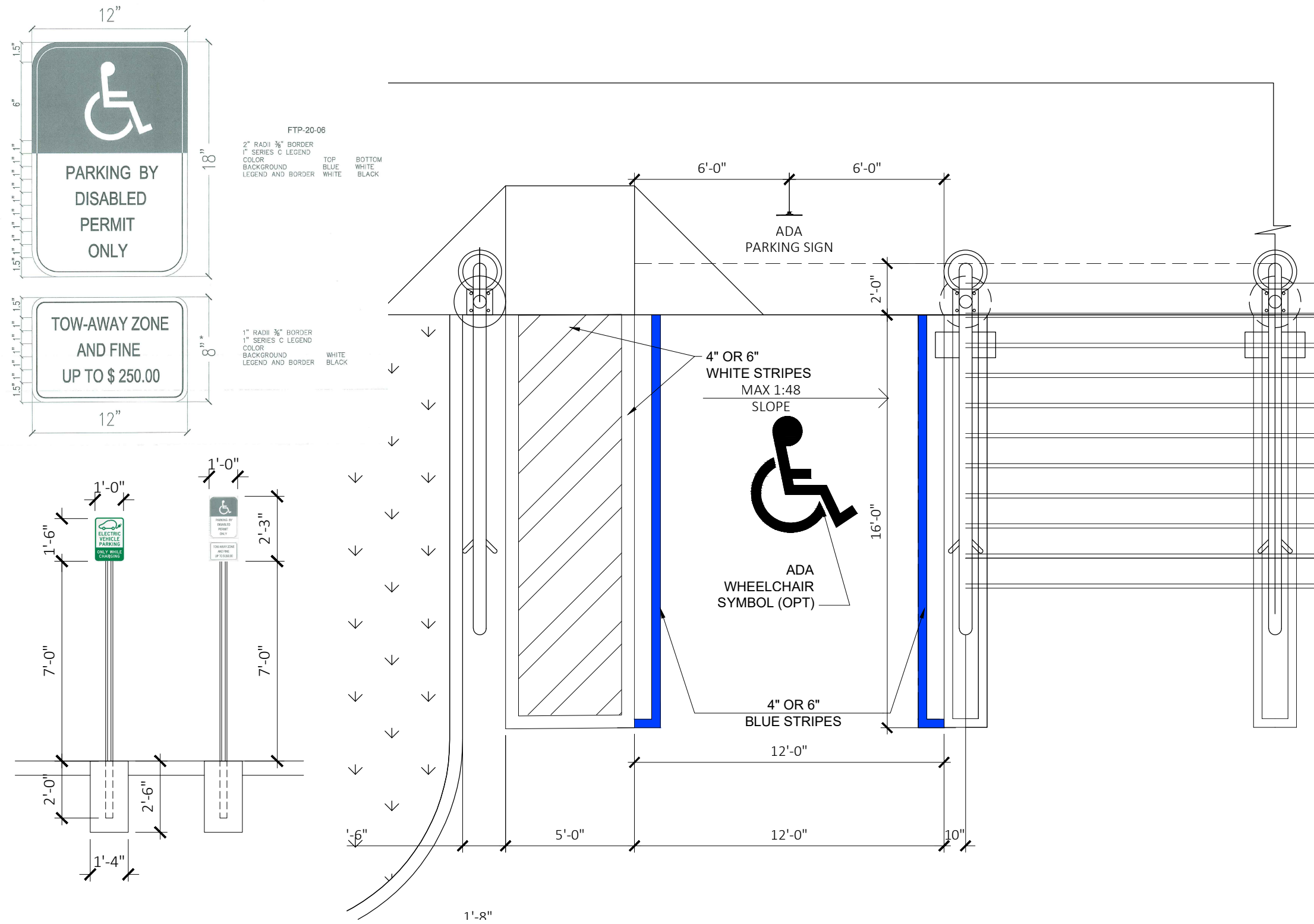
A002 SCALE: NTS (MAX HEIGHT 32'-0" NAVD) GRADE AT INSTALLATION +7.00 NAVD

1A DUMPSTER ENCLOSURE DETAILS

A002 SCALE: 1/4" = 1'-0"

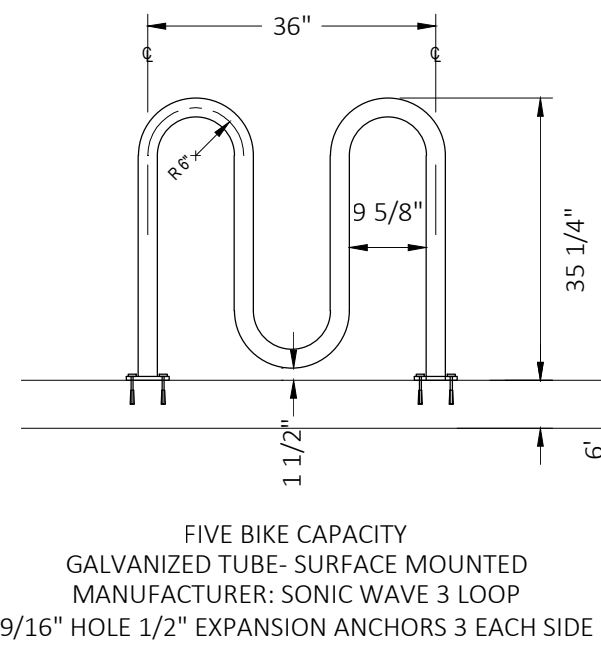
1A DUMPSTER ENCLOSURE DETAILS

A002 SCALE: 1/4" = 1'-0"



3 STANDARD AND ADA PARKING DETAIL

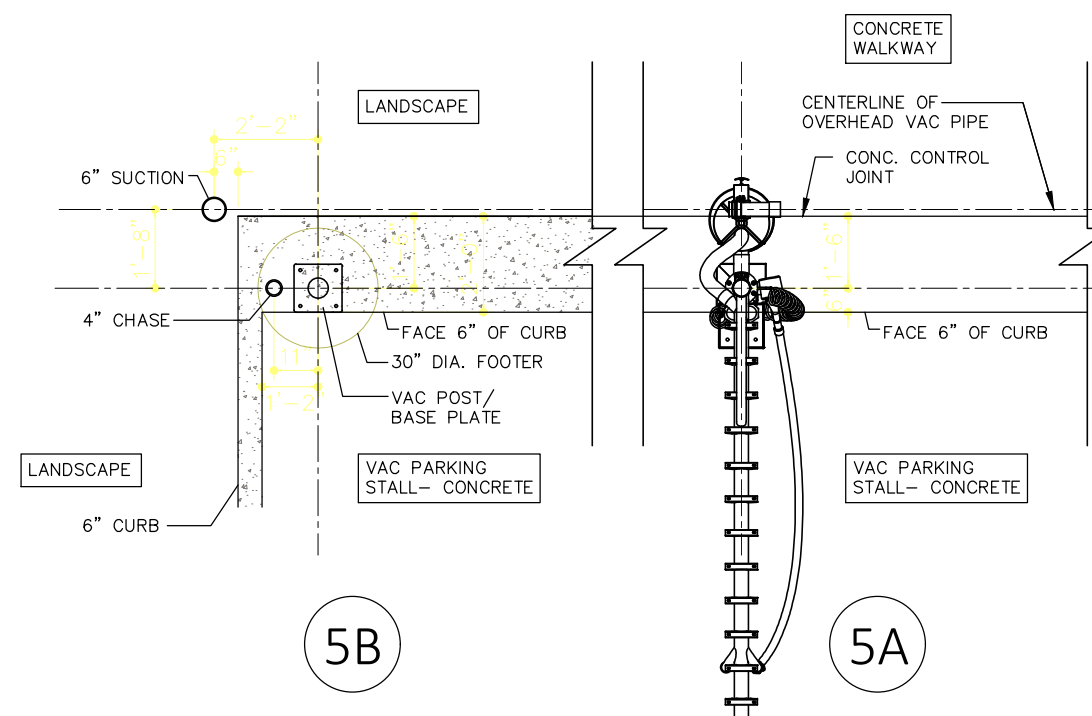
A002 SCALE: 1/4" = 1'-0"



- NOTES:**
1. INSTALLATION TO BE COMPLETED IN ACCORDANCE WITH MANUFACTURER'S SPECIFICATIONS.
 2. ALL DIMENSIONS ARE CONSIDERED TRUE AND REFLECT MANUFACTURER'S SPECIFICATIONS.
 3. DO NOT SCALE DRAWING.

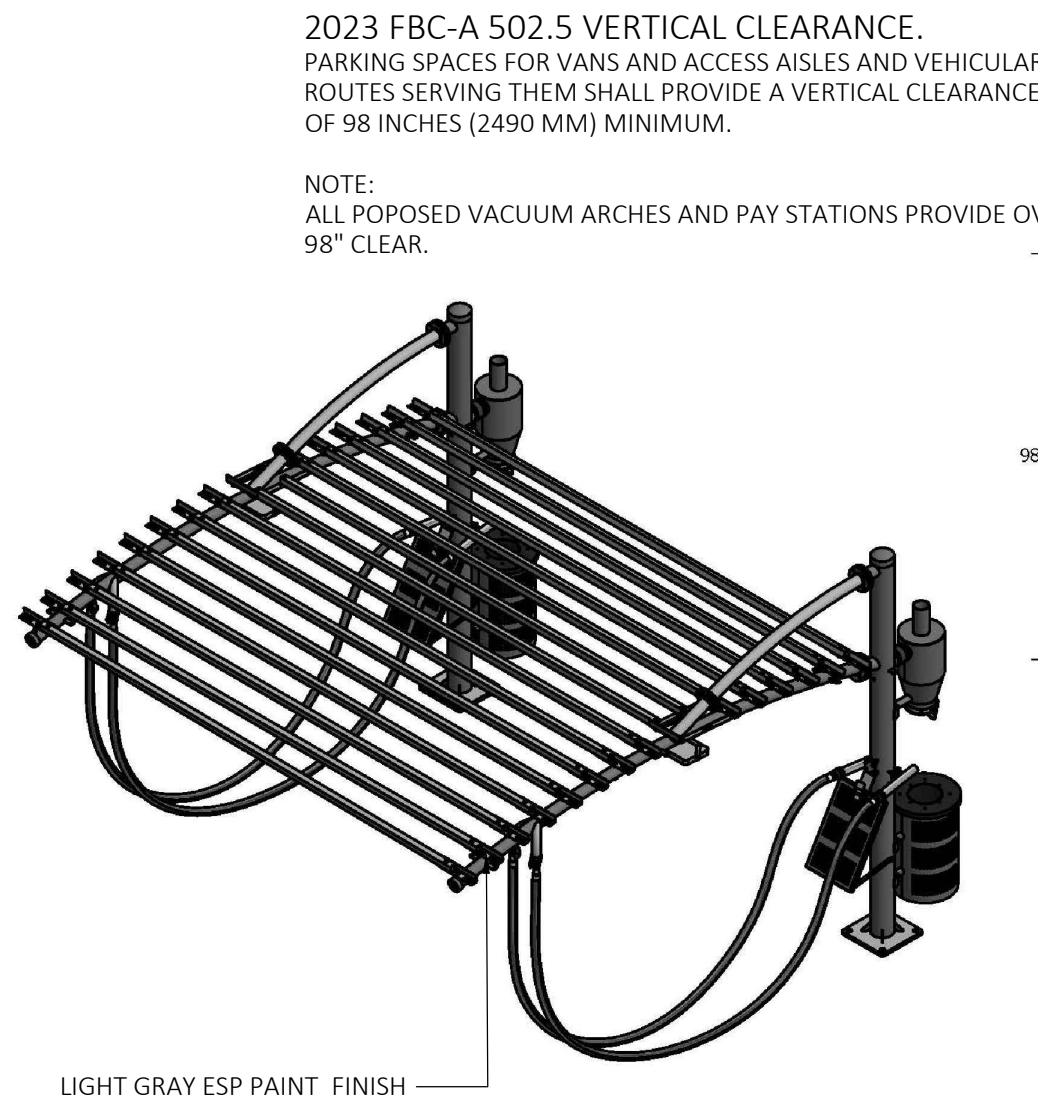
6 STANDARD BIKE RACK

A002 SCALE: 1/2" = 1'-0"

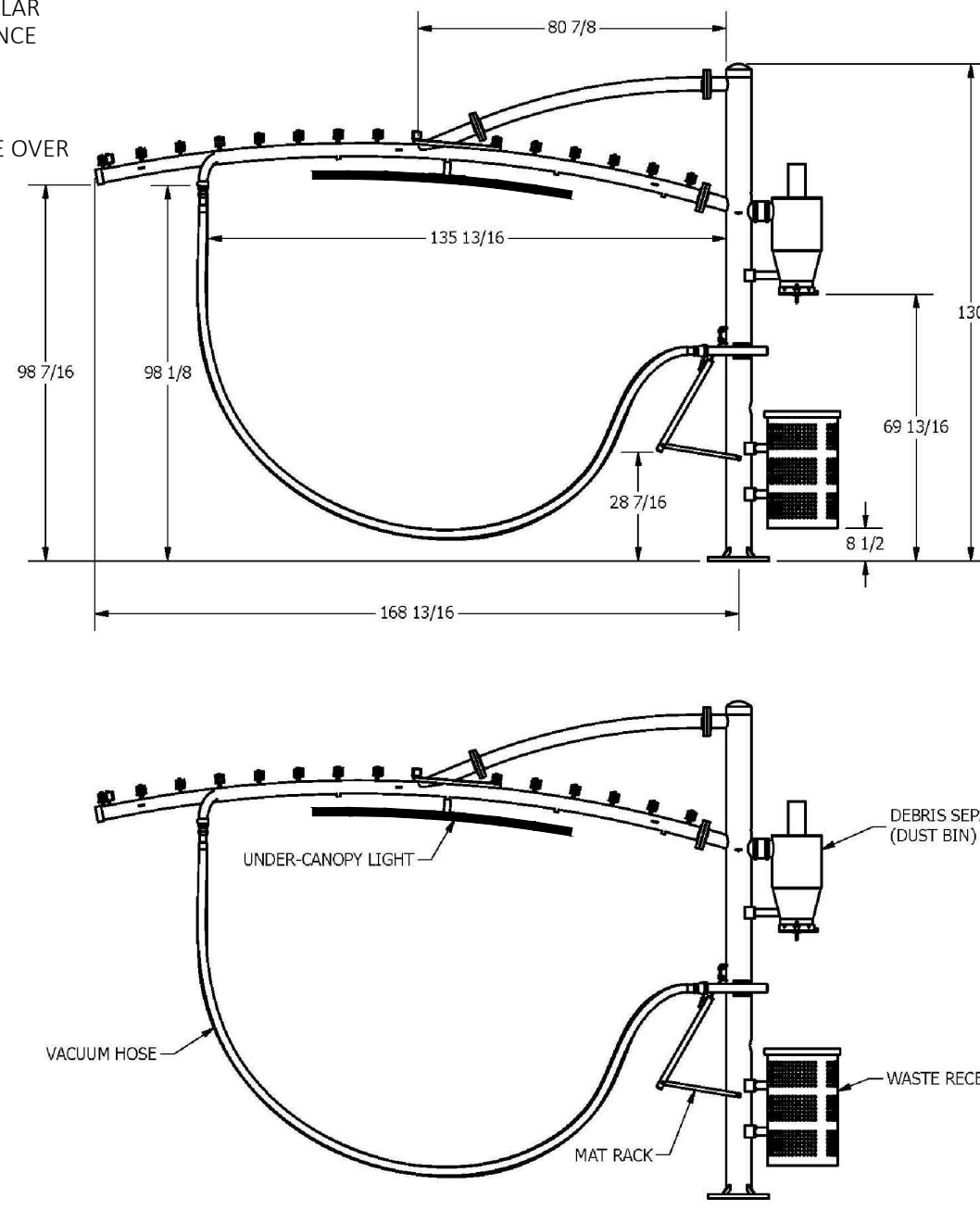


5 MISCELLANEOUS VACUUM DETAILS

A002 SCALE: 1/4" = 1'-0"

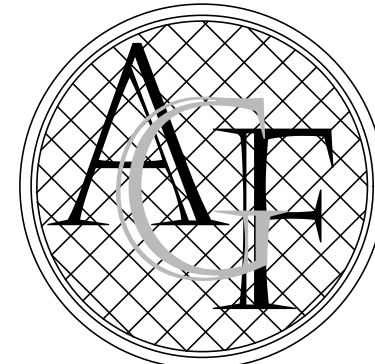


NOTE: ALL POPOSED VACUUM ARCHES AND PAY STATIONS PROVIDE OVER 98" CLEAR.



2 TYPICAL VACUUM ARCHES - VACUTECH DETAILS

A002 SCALE: NTS



FANJUL & ASSOCIATES, LLC
ARCHITECTURE, PLANNING & INTERIOR DESIGN

AA26000725

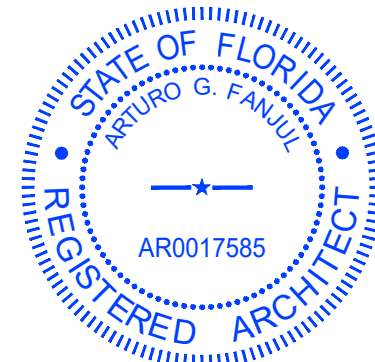
ARTURO G. FANJUL, RA
PRESIDENT

5455 SW 8TH STREET, SUITE 240
CORAL GABLES, FLORIDA 33134

PH. 305 726.8313
FAX 305 356.3686

arturo@fanjularchitects.com

"A BETTER LIFE THROUGH DESIGN"



ARTURO G. FANJUL ARO017585
STATE OF FLORIDA REGISTERED ARCHITECT

This item has been electronically signed and sealed by:

Printed copies of electronically signed, dated, and sealed documents are not considered signed and sealed and the SIA authentication code must be verified on any electronic copies.

DESIGN REVIEW



WEST POMANO

2690 W SAMPLE ROAD
POMPANO BEACH, FL 33069
ID:484221070031/32/32

SITE ACCESSORIES

REVISION NO.

DATE: 10/24/2025

SCALE:

DRAWN: AGF

CHECKED: AGF

JOB NO. 24-0704

PERMIT NO.

OWNERSHIP
OF THESE DOCUMENTS & SPECIFICATIONS AS INSTRUMENTS OF SERVICE ARE AND SHALL REMAIN THE PROPERTY OF THE ARCHITECT. WHETHER THE PROJECT THEY ARE MADE FOR IS EXECUTED OR NOT, THEY SHALL NOT BE USED BY OWNER OR OTHERS ON OTHER PROJECTS OR FOR ADDITIONS TO THIS PROJECT BY OTHERS, EXCEPT BY AGREEMENT IN WRITING AND WITH APPROPRIATE COMPENSATION TO THE ARCHITECT.

A002